

ULTIME D Patented

Metalfire

Technical Document

ULTIME D MF 800-75 WHE 1S Brick

Dimensions (mm)

- combustion opening WxH: 836 x 756
- external WxDxH: 1011 x 620 x 2069
- fresh air intake: 2 x Ø150
- flue gas outlet: Ø250

Technical Data

- ecolabel: A
- capacity: 18.2kW
- efficiency: 82.3%
- CO (volume with 13%O2): 0.08%
- dust (volume with 13%O2): 26mg/Nm3
- weight: 350kg
- convection air inlet: min.700cm2 (4 x Ø150)
- convection air outlet: min.700cm2 (4 x Ø150)

First aid and technical support:

- support@metalfire.eu
- +32 9 261 51 90

scale 1:20

www.metalfire.eu EN 13229

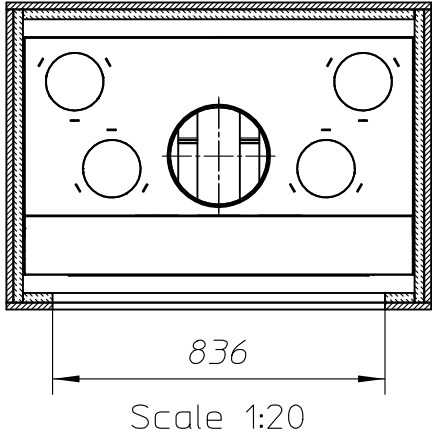
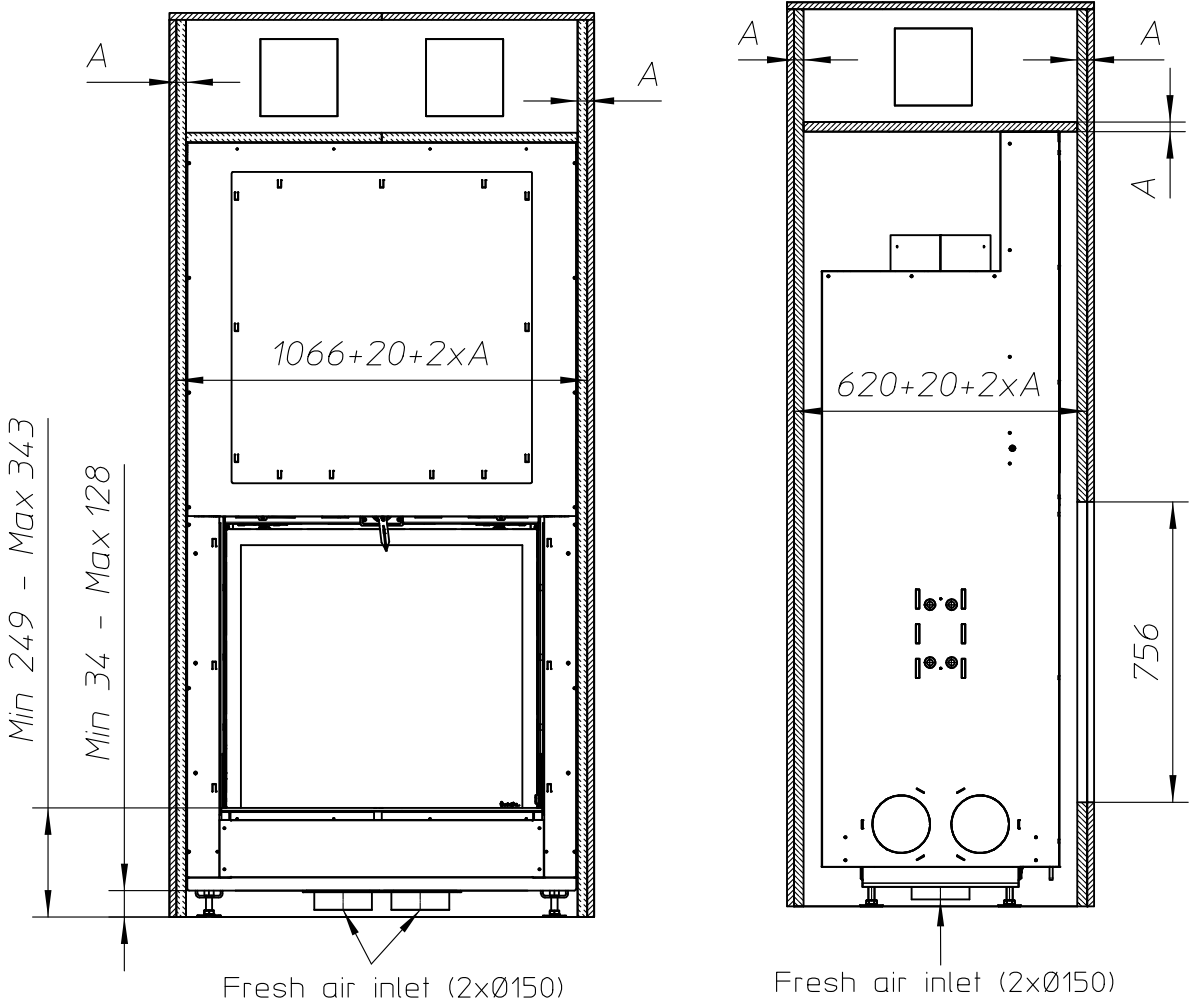
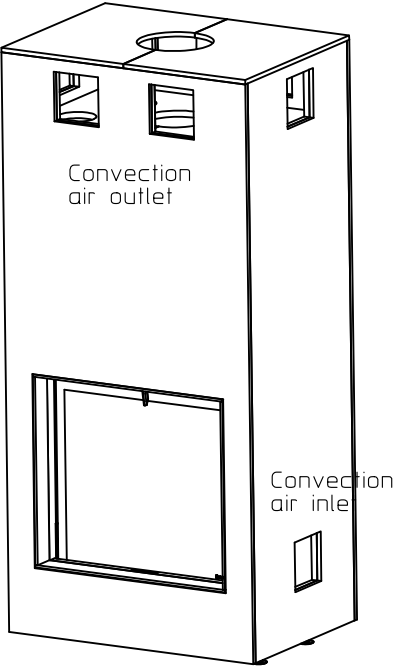
General dimensional tolerances up to 6mm
Metalfire preserves the right to modify specifications without previous notice

Rev.
A

CE

Sheet
1/5

Without finishing frame

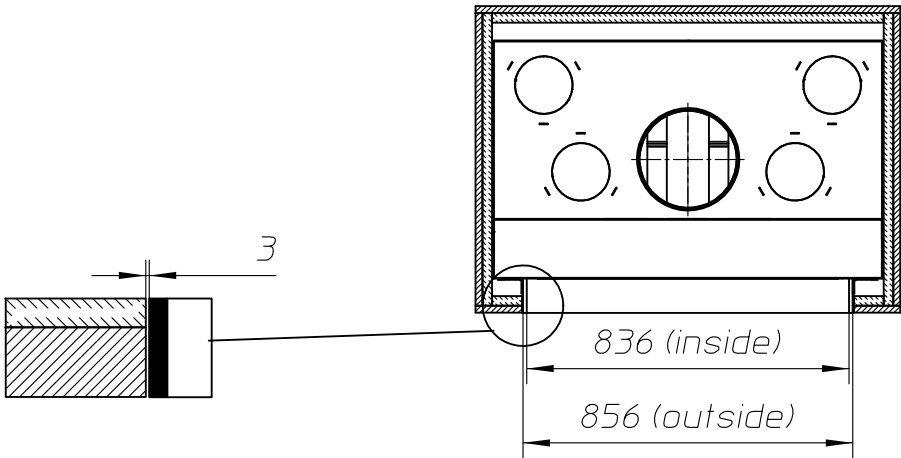
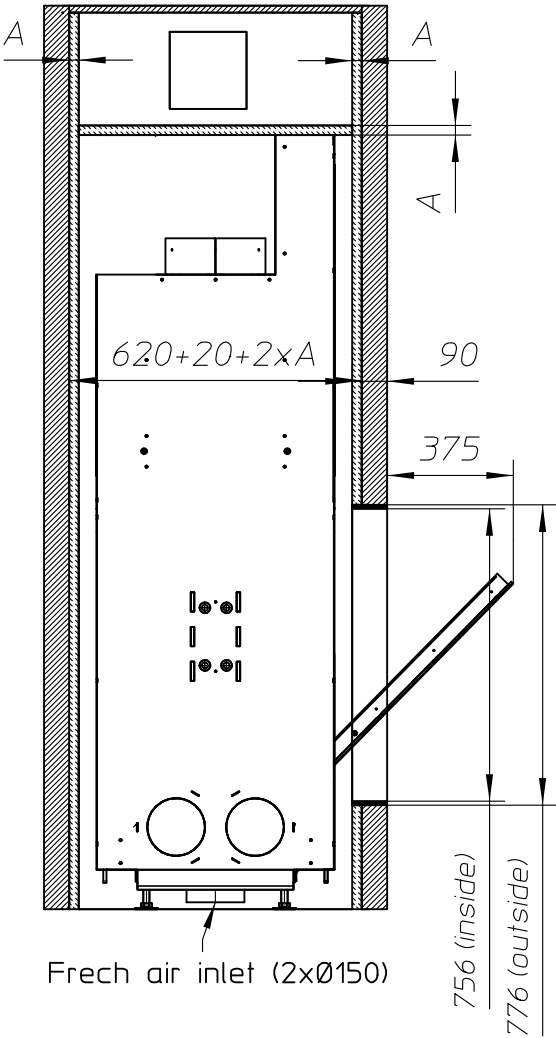
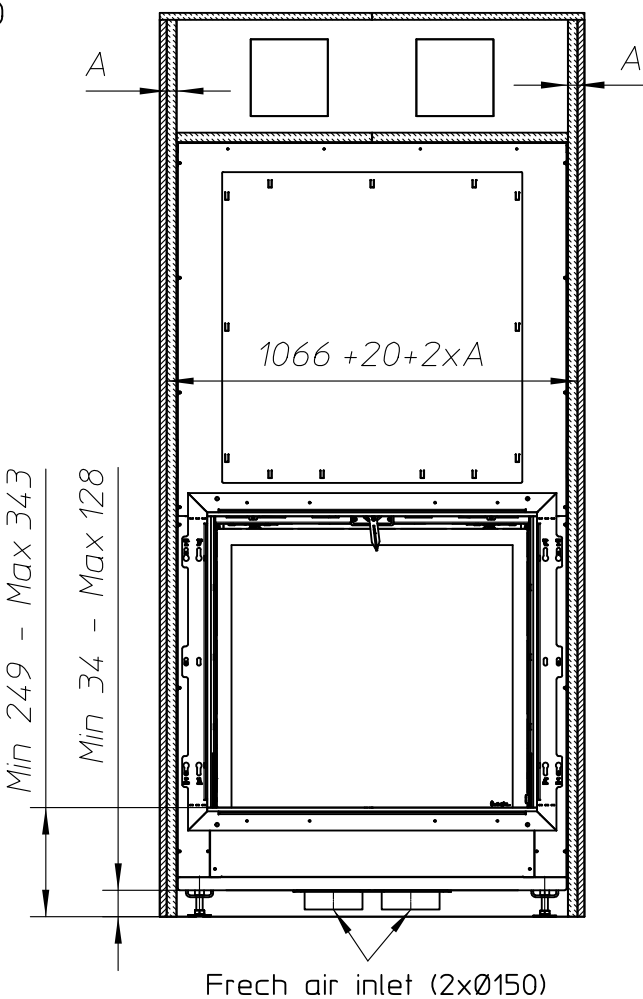
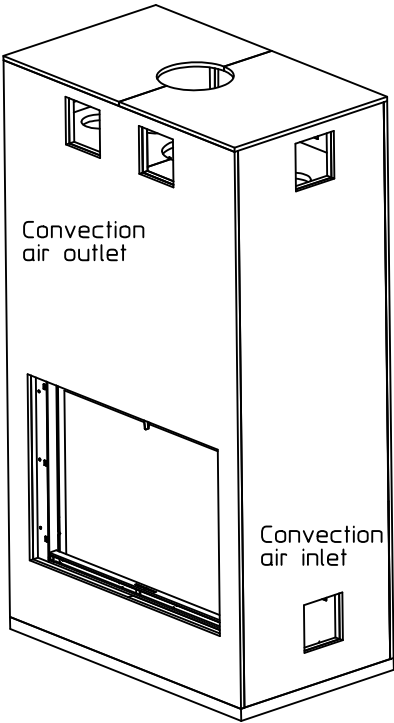



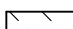
Combustable finishing material
Insulation (thickness see table)

ULTIME D <small>Patented</small>	
<i>(Metalfire)</i>	
Technical Document	
ULTIME D MF 800-75 WHE 1S BRICK	
Prescribed insulation thickness (mm)	
Combustable finishing material	
Metalfire recommended SILCA T 300 (TC = 0,09 W/mK)	A = 25mm
Non-combustable finishing material	
non-combustable materials structural building items EXCLUDED e.g. load bearing walls	A = 0mm
TC = thermal conductivity NC = non-combustable	

First aid and technical support:	
- support@metalfire.eu	
- +32 9 261 51 90	
scale 1:20	Rev. A
www.metalfire.eu EN 13229	CE
General dimensional tolerances up to 6mm Metalfire preserves the right to modify specifications without previous notice	
Sheet 2/5	

With finishing frame 90/10



 Combustible finishing material
 Insulation (thickness see table)

ULTIME D Patented

Metalfire

Technical Document

ULTIME D MF 800-75 WHE 1S BRICK

Prescribed insulation thickness (mm)

Combustible finishing material

Metalfire recommended
SILCA T 300
(TC = 0,09 W/mK)

A = 25mm

Non-combustable finishing material

non-combustable
materials
structural building items
EXCLUDED e.g. load bearing walls

A = 0mm

TC = thermal conductivity

NC = non-combustable

First aid and technical support:

- support@metalfire.eu
- +32 9 261 51 90

scale 1:20

www.metalfire.eu

EN 13229

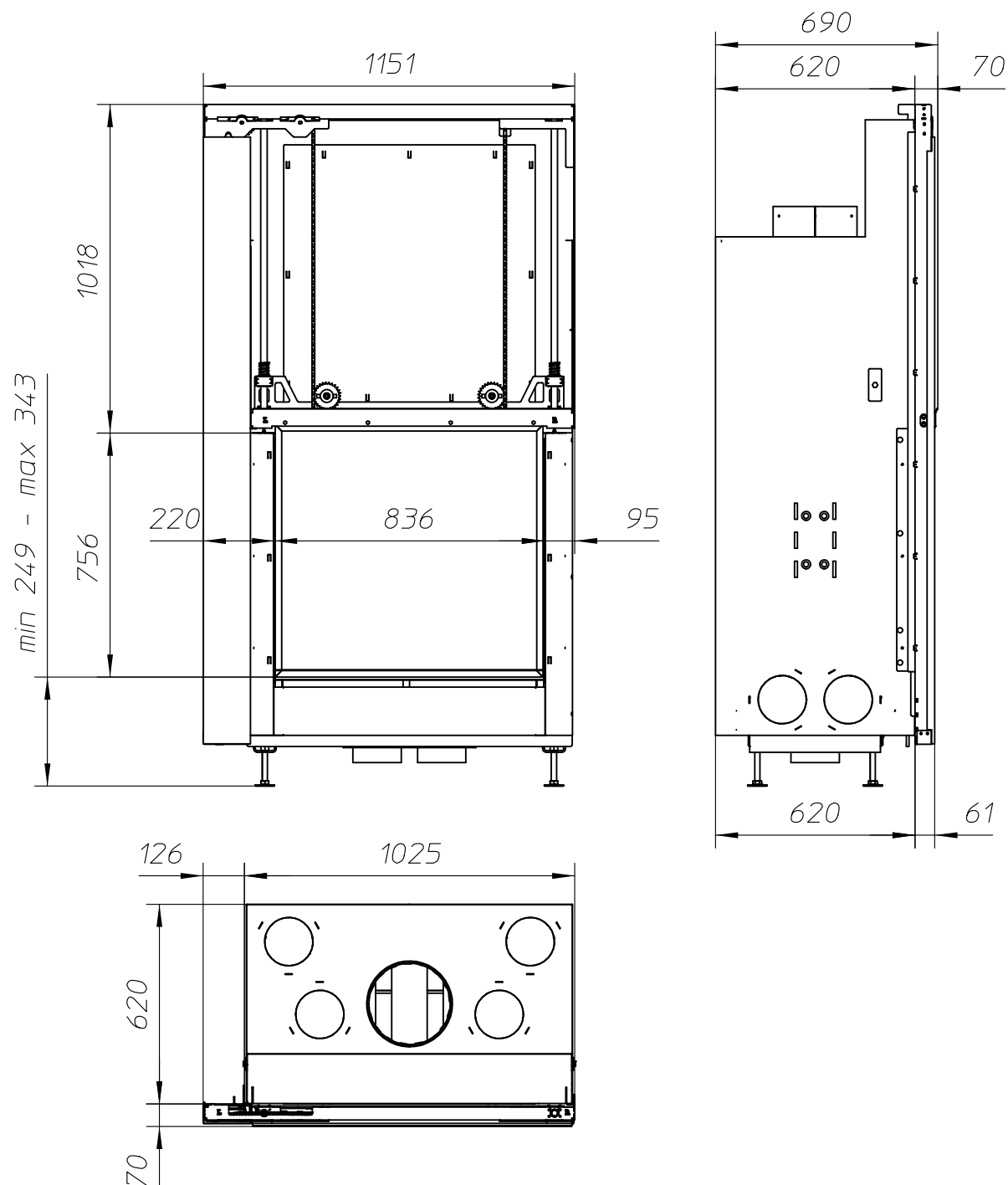
General dimensional tolerances up to 6mm
Metalfire preserves the right to modify specifications without previous notice

Rev.
A

CE

Sheet
3/5

WITH FIRESCREEN - NO FINISHING FRAME



ULTIME D^{Patented}

Metalfire

Technical Document

ULTIME D MF 800-75 WHE 1S Brick

Dimensions (mm)

- combustion opening WxH: 836 x 756
- external WxDxH: 1151 x 690 x 2069
- fresh air intake: 2 x Ø150
- flue gas outlet: Ø250

Technical Data

- ecolabel: A
- capacity: 18.2kW
- efficiency: 82.3%
- CO (volume with 13%O₂): 0.08%
- dust (volume with 13%O₂): 26mg/Nm³
- weight: 350kg
- convection air inlet: min.700cm² (4 x Ø150)
- convection air outlet: min.700cm² (4 x Ø150)

First aid and technical support:

- support@metalfire.eu
- +32 9 261 51 90

scale 1:20

www.metalfire.eu EN 13229

General dimensional tolerances up to 6mm
Metalfire preserves the right to modify specifications without previous notice

Rev.
A

CE

Sheet
4/5

Metalfire

Technical Document

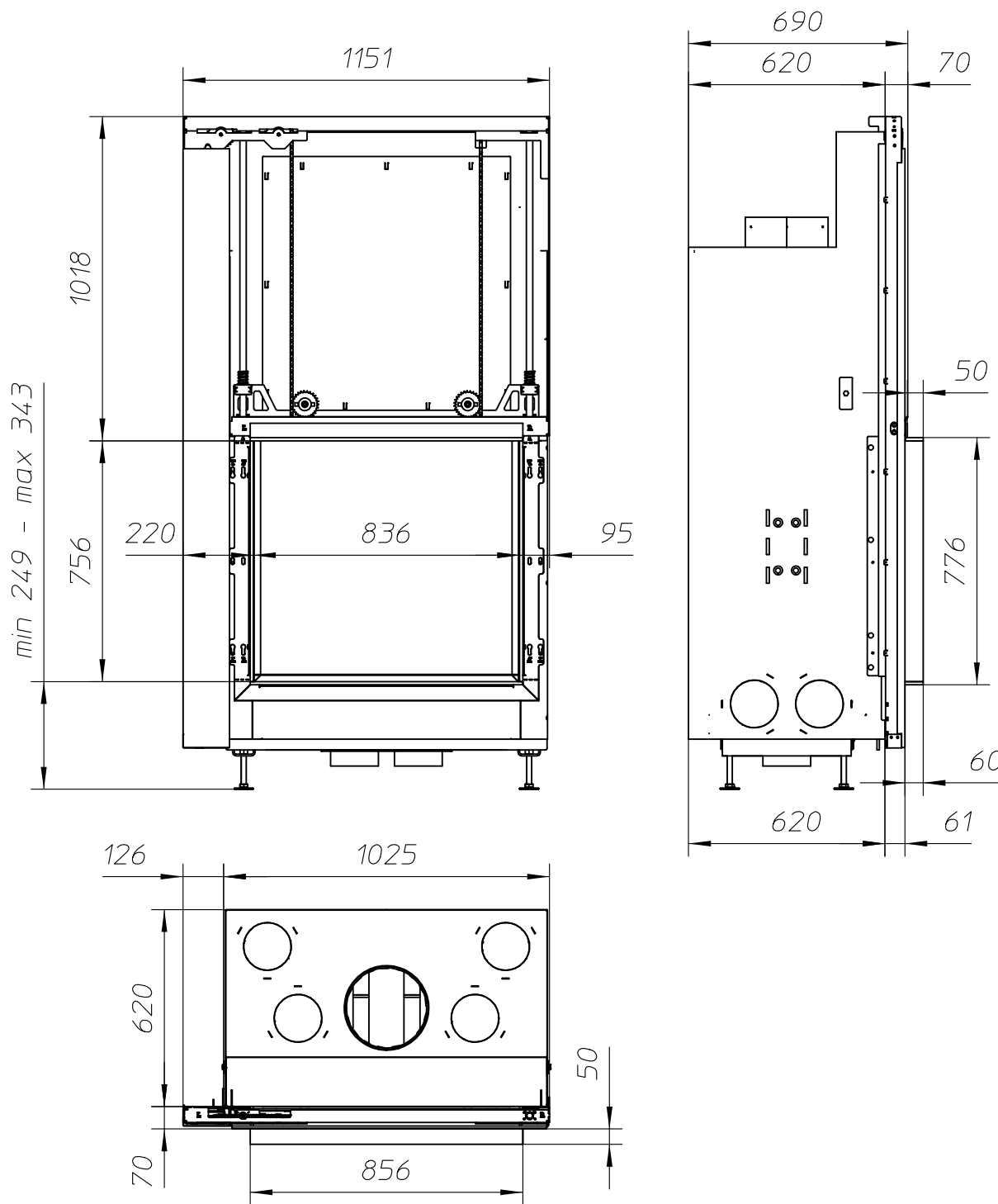
ULTIME D MF 800-75 WHE 1S Brick

Dimensions (mm)

- combustion opening WxH: 836 x 756
- external WxDxH: 1151 x 740 x 2069
- fresh air intake: 2 x Ø150
- flue gas outlet: Ø250

Technical Data

- ecolabel: A
- capacity: 18.2kW
- efficiency: 82.3%
- CO (volume with 13%O₂): 0.08%
- dust (volume with 13%O₂): 26mg/Nm³
- weight: 350kg
- convection air inlet: min.700cm² (4 x Ø150)
- convection air outlet: min.700cm² (4 x Ø150)



First aid and technical support:

- support@metalfire.eu
- +32 9 261 51 90

scale 1:20

Rev.
A

www.metalfire.eu EN 13229

CE

General dimensional tolerances up to 6mm
Metalfire preserves the right to modify specifications without previous notice

Sheet
5/5